

LABOUR FORCE AT A GLANCE

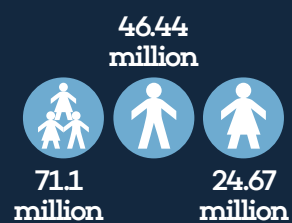
■ Employed
■ Unemployed
■ Not in Labour Force



Employed

58.8%

(Employment-to-Population Ratio)



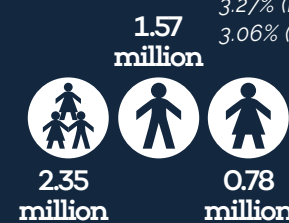
COMPARED TO Q4 2022

Total ↑ 0.07 million
Male ↑ 0.7 million
Female ↓ 0.63 million

Unemployed

3.20%

(unemployment rate)



COMPARED TO Q4 2022

Total ↑ 0.04 million (↑0.05%)
Male ↓ 0.08 million (↓0.21%)
Female ↑ 0.12 million (↑0.52%)

Not in Labour Force

39.2%

(of working age population)



COMPARED TO Q4 2022

Total ↑ 1.49 million
Male ↑ 0.07 million
Female ↑ 1.42 million

According to the Fourth Quarter Labour Force Survey 2023, conducted by the Bangladesh Bureau of Statistics (BBS), both the size of the labour force and the employed population have increased in one year. At the same time the size of unemployed population is on the rise, resulting in an increase in unemployment rate and a decrease in labour force participation rate. Agriculture remains the highest employment sector, followed by service, then industry. The infographic is a visual representation of the state of labour and employment in Bangladesh.

Total estimated population:

172.34 million

Working population aged 15 and above:

120.82 million

Male: 59.82 million

Female: 61.00 million

Notable observations from the survey are the decrease in female labour force size and participation rate in one year. Sector wise, agriculture, which have historically been the highest employment sector in Bangladesh saw a decrease in the number of employed people. The service sector also observed a slight decrease, but industry saw an increase. ■

Labour Force

60.80%
(labour force participation rate)
80.26%
(male labour force participation rate)
41.72%
(female labour force participation rate)



Total: 73.46 million (↑0.11 million)
Male: 48.01 million (↑0.62 million)
Female: 25.45 million (↓0.51 million)

Compared to Q4 2022

Total ↑ 0.11 million (↓0.7%)
Male ↑ 0.62 million (↑0.16%)
Female ↓ 0.51 million (↓1.48%)

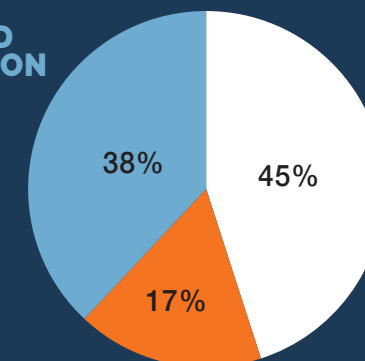
YOUTH LABOUR FORCE

Total: 26.28 million (↑0.49 million)
Male: 13.18 million (↑0.15 million)
Female: 13.1 million (↑0.16 million)

- Labor force refers to the total of the employed and unemployed population aged 15 and over.
- According to ILO guidelines, those who have worked for at least 1 hour in the past 7 days for salary/wage or profit for producing goods for their own consumption are employed.
- The unemployed population is those who have not worked for at least 1 hour in the last 7 days but are ready to work and have been looking for work for pay/wage or profit in the last 30 days.
- Employment-to-population ratio is the total employed population divided by working age population.

EMPLOYED POPULATION BY SECTOR

■ Agriculture
■ Industry
■ Service



Agriculture: 31.78 million (↓1.58 million)
Industry: 12.49 million (↑0.46 million)
Service: 26.84 million (↑1.19 million)